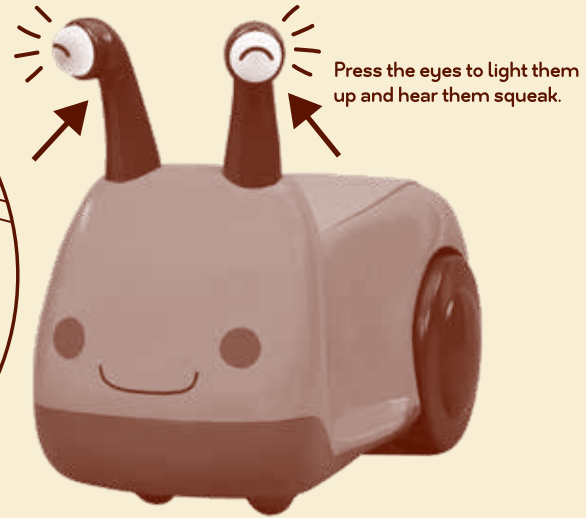
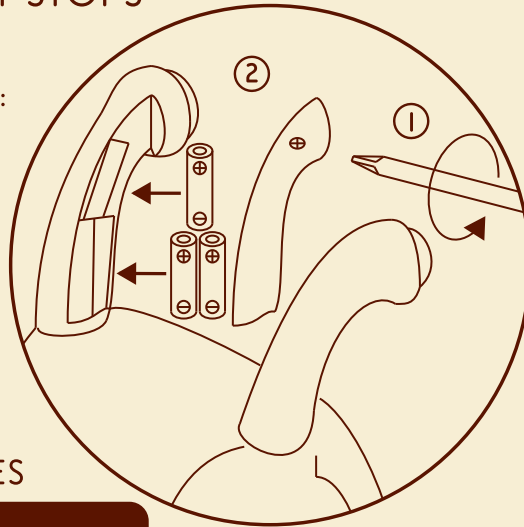


# WHEN THE BUGGLY STOPS WUGGLING, SWAP OUT THE BATTERIES:

1. Use a Phillips-head screwdriver to open up the battery compartment in one of the antennas.
2. Pop in 3 AAA batteries. Don't mix old and new batteries or alkaline, standard carbon-zinc and rechargeable batteries.



## REPLACING BATTERIES

### 3 AAA (1.5V) BATTERIES INCLUDED

- Do not mix old and new batteries
- Do not mix alkaline, standard (carbon-zinc), or rechargeable batteries
- Use alkaline batteries for longer play time.
- Dead batteries? Check out [earth911.com](http://earth911.com) to quickly find the recycling center nearest you

This device complies with Part 15 of the FCC Rules. Operation is subject to the following two conditions: (1) this device may not cause harmful interference, and (2) this device must accept any interference received, including interference that may cause undesired operation.

Caution: changes or modifications not expressly approved by the party responsible for compliance could void the user's authority to operate the equipment.

NOTE: This equipment has been tested and found to comply with the limits for a Class B digital device, pursuant to Part 15 of the FCC Rules. These limits are designed to provide reasonable protection against harmful interference in a residential installation. This equipment generates, uses and can radiate radio frequency energy and, if not installed and used in accordance with the instructions, may cause harmful interference to radio communications. However, there is no guarantee that interference will not occur in a particular installation. If this equipment does cause harmful interference to radio or television reception, which can be determined by turning the equipment off and on, the user is encouraged to try to correct the interference by one or more of the following measures:

- Reorient or relocate the receiving antenna. → Increase the separation between the equipment and receiver.
- Connect the equipment into an outlet on a circuit different from that to which the receiver is connected.
- Consult the dealer or an experienced radio/TV technician for help.

See what's rolling at B.  
Visit [mytoys.com](http://mytoys.com). If you have  
questions, comments or party  
invitations, call us (toll free).  
1-866-665-5524

Go, Buggly Wuggly, Go!  
Hop on and use your feet to go, go, go!

© 2018 Maison Battat Inc.  
B. and Buggly Wuggly and  
Just B. Just You. B. You are  
trademarks of Maison Battat Inc.

Manufactured for Maison Battat Inc.  
8440 Darnley Road,  
Montreal, P.Q. H4T 1M4  
Designed by Maison Battat Inc.  
Consumer Information Line:  
1-866-665-5524

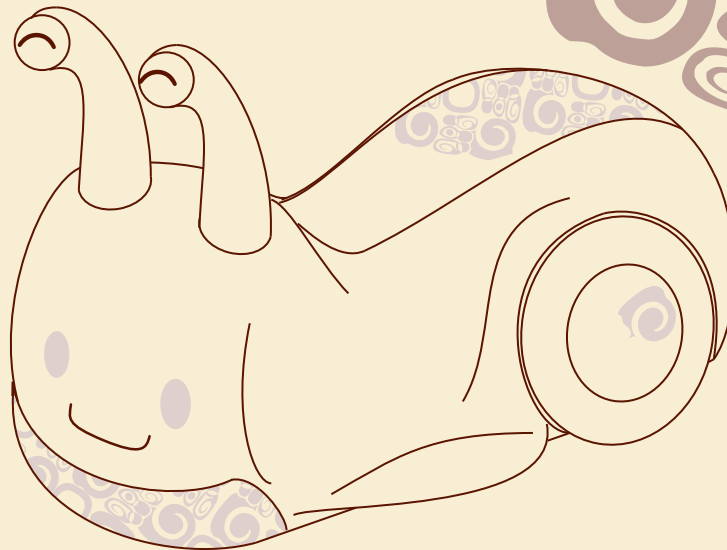
100% RECYCLED  
WOOD-FREE PAPER  
PRINTED WITH  
SOY-BASED INKS



# B.

## Buggly Wuggly™

| TO 3 YEARS



### B. careful

To keep this buggly wuggling safely, keep it away from cars and roads, swimming pools and steep hills and steps. To show off your best moves, wear shoes for extra grip and make sure an adult is watching you go! Never allow more than one rider. Buggly Wuggly was built for infants aged 12 to 36 months up to 23 kg (50 lbs).

- Before using this toy for the first time, make sure to remove all packaging. Wipe clean only.
- As strong as this toy appears to be, never allow more than 1 child at a time.
- Not suitable for children over 3 years.
- Keep in mind that this toy should be used with caution.
- Skills are required to avoid falls and collisions that may injure the user or spectators.
- Make sure this toy is used under adult supervision.
- To avoid any risks of pinching, do not put oversized toys inside the storage and make sure the seat is closed properly.